



SERVING THE FOOD INDUSTRY SINCE 1951

Stainless Steel Hydraulic Piston Sausage Stuffers with 26lb / 12kg Capacity

ITEM:	45950	46098	46099
MODEL:	SS-ES-0026-F	SS-ES-0026-FS	SS-ES-0026-FT



Experience the power of hydraulic technology that makes sausage stuffing smoother and more efficient than ever.

The hydraulic piston ensures consistent pressure, making it easy to control the sausage stuffing process and achieve professional results every time. It's built to withstand the demands in the kitchens. Upgrade your sausage-making game with this equipment.

FEATURES:

- 2 wheels and handle for easy transport
- Easily accessible speed control
- Pressure gauge
- Removable lid; adjustable lock nuts with handle
- Independent hydraulic oil reservoir
- Thermal protected motor
- Automatic knee lever lock until the piston reaches the lower position



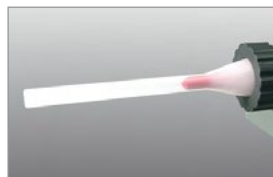
Ergonomic knee lever
Reversible operating direction



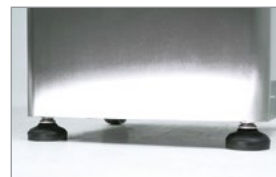
Removable lid,
adjustable lid lock
nuts with handles



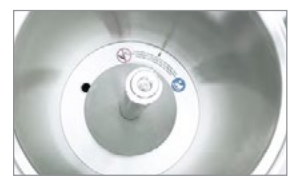
Speed control &
pressure gauge



3 transparent nozzles,
ø ext 14, 20 and 30 mm.
Maximum hygiene,
without edges



Adjustable
anti-vibration feet



Fully stainless
steel barrel bottom
with water draining outlet.
Simple cleaning.

Telephone: 1-800-465-0234

Fax: (905) 607-0234

Email: sales@omcan.com

Website: www.omcan.com



Authorized Dealer



FOR 45950

NEMA
6 - 15P
125VAC / 15 AMP



FOR 46098

NEMA
6 - 15P
250VAC / 15 AMP

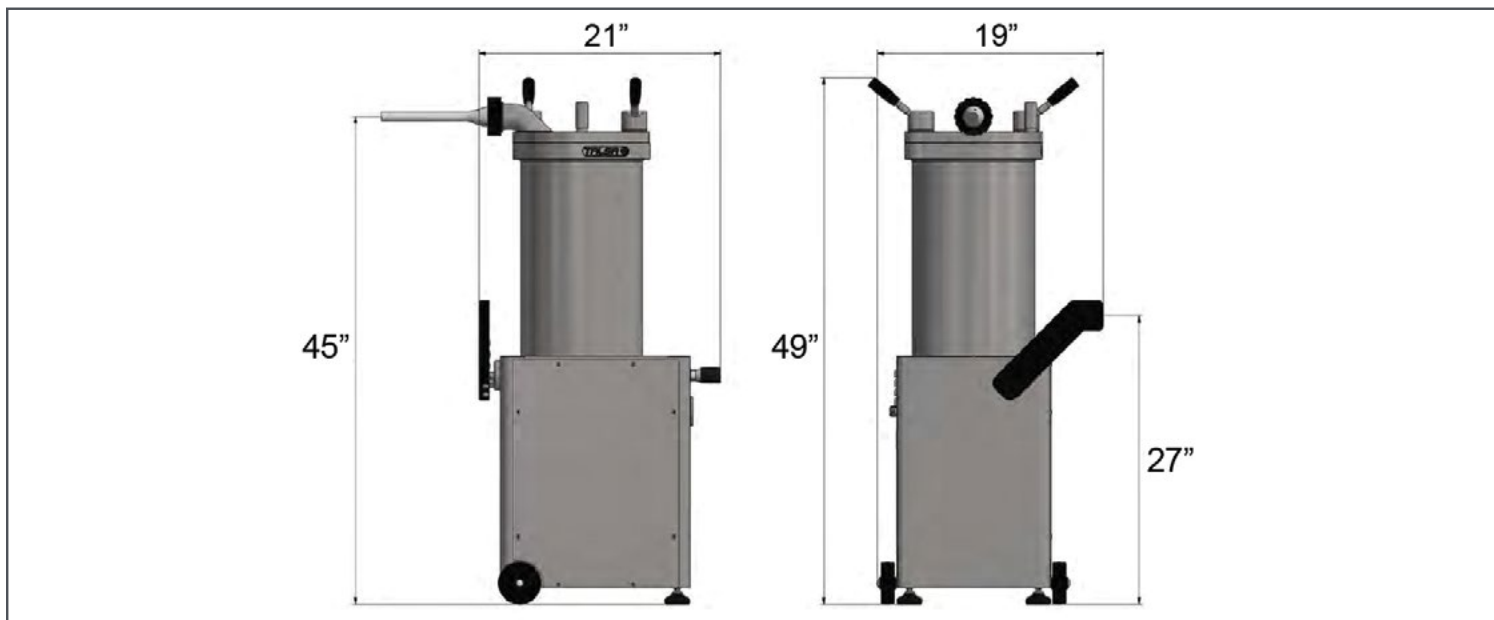


FOR 46099

NEMA
L15 - 20P
250VAC / 20 AMP



TECHNICAL DRAWING



TECHNICAL SPECIFICATION

Features	750W, 110V with 1Ph	750W, 220V with 1Ph	550W, 208V with 3Ph
Item	45950	46098	46099
Model	SS-ES-0026-F	SS-ES-0026-FS	SS-ES-0026-FT
Approx. Meat Capacity	26 lb. / 12 kg.	26 lb. / 12 kg.	26 lb. / 12 kg.
Barrel Capacity	14.2 L / 3.7 Gal	14.2 L / 3.7 Gal	14.2 L / 3.7 Gal
Operating Temperature	5 to 40°C / 40 to 100°F	5 to 40°C / 40 to 100°F	5 to 40°C / 40 to 100°F
Power	1 HP / 750 W	1 HP / 750 W	0.75 HP / 550W
Amps	11 A	5 A	3.6 A
Electrical	110V / 60Hz / 1Ph	220V / 60Hz / 1Ph	208V / 60Hz / 3Ph
Net Weight	265 lb. / 120 kg.		
Net Dimensions	21" x 19" x 49" / 533.4 x 482.6 x 1244.6 mm		
Gross Weight	310 lb. / 140 kg.		
Gross Dimensions	17" x 27" x 54" / 430 x 680 x 1370 mm		
Plug Type	NEMA 5-15P	NEMA 6-15P	NEMA L15-20P



OTHER ACCESSORIES (SOLD SEPARATELY)

Item	Description	Compatible
69577	Black Stainless Steel Swivel Caster with Break	45950, 467098, 46099